

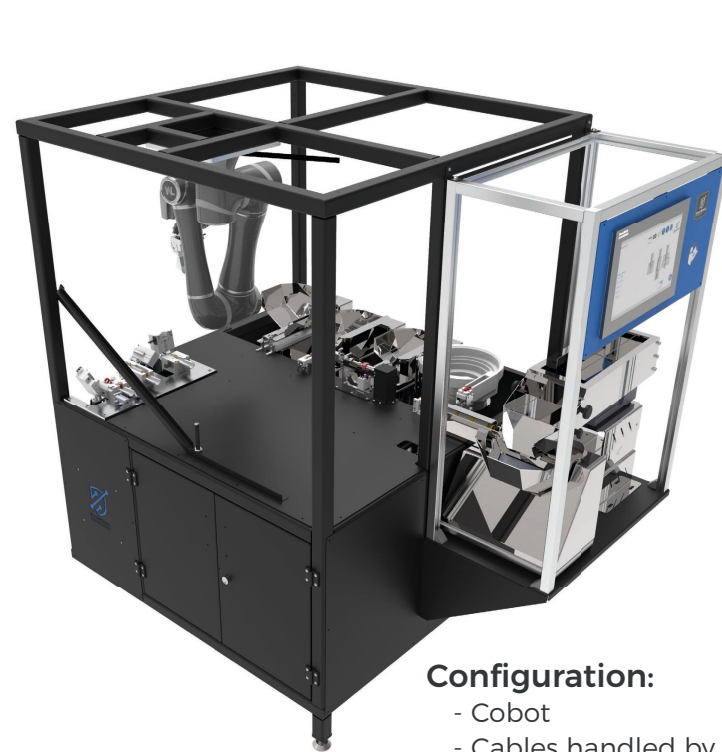
HV-RAM

High-Voltage - Robotic (pre) Assembly Machine

P/N: 01-03-0007

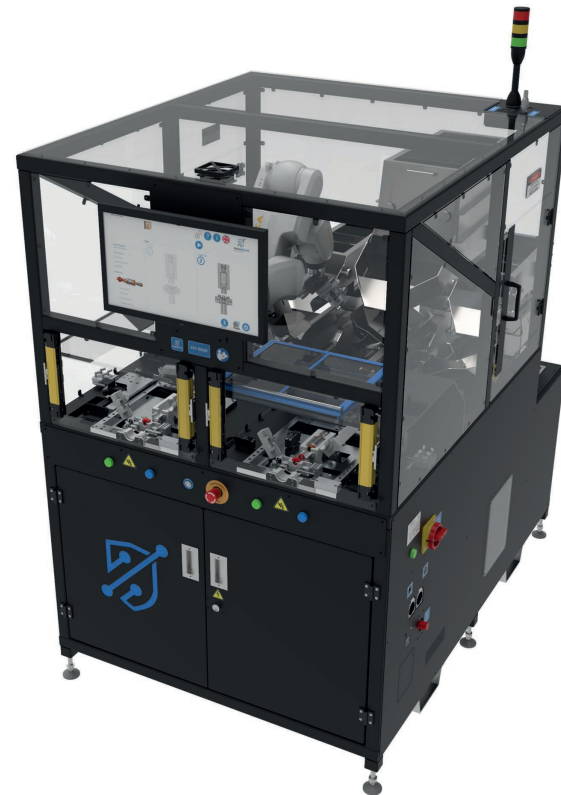
In Partnership with:

komax
komaxgroup.com



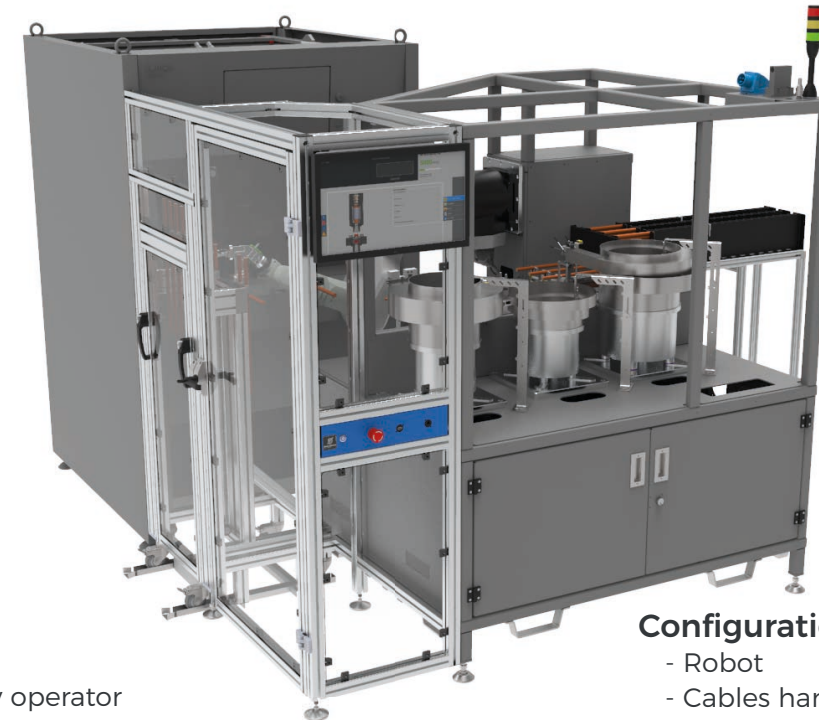
Configuration:

- Cobot
- Cables handled by Cobot
- Dedicated feeders
- 5 components
- Tacktime 32 sec.



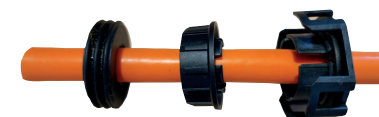
Configuration:

- Robot
- Cables handled by operator
- Dedicated feeders
- 4 components
- Tacktime 18 sec.



Configuration:

- Robot
- Cables handled by Robot
- Dedicated feeders
- 3 components
- Feeds Komax's Lambda 240 directly and stores processed cables into rack
- Tacktime 15 sec.



Applications:

Pre-assembly of connector's parts in HV cables



Nominated for the
productronica
innovation award 2021

The HV-RAM, High-Voltage Robot (pre) Assembly Machine, is a solution for assembling HV cable components, using Cobots or Robots in pre-assembly (before cutting, stripping, etc).

Several configurations are possible, using dedicated bowl feeders to supply each of the components in a fast and autonomous way or flexible vibrational feeders to provide additional flexibility.

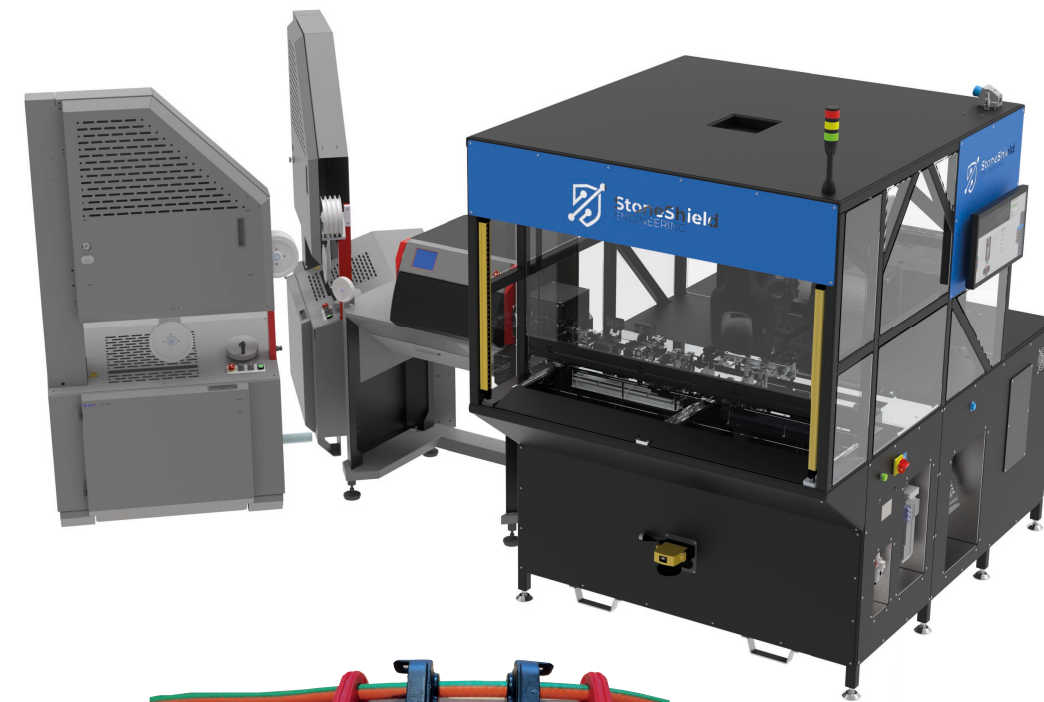
It can work in standalone mode or integrated with other machines, such as cutting and/or post processing machines (integration made in partnership with Komax machines).

Also, the robot can handle the cables or these can be handled by the operator, depending if additional autonomy or faster tacktimes are required.

The robot picks up the individual components and puts them into poke-yoke jigs. If the cable is handled by the robot, it then picks up the cables from a rack that holds them after being cut, or the cable is fed directly from the cutting machine and performs the pre-assembly. After the pre-assembly, it can feed the assembly to a Lambda machine, or put the pre-assembly into a storage rack.

The process has a tacktime of 4.5 seconds per component.

The complete configuration: Kappa->HV-RAM->Lambda (HV-RoFAL), automates the tasks of 4 manual operations.



Configuration:

- Robot
- Cables handled by Robot
- 2 cables processed simultaneously
- Flexible feeders
- 2x2 components
- Cable fed directly from Komax's Kappa cutting machine

